



FC-Hy
Guide

Training Course
***ILCD editor for ILCD
compliant data sets***

29 September 2011, Bologna



***Research Centre
E. Clementel***

Alessandra Zamagni
LCA and Ecodesign Laboratory

- The ELCD database and upcoming ILCD data sets (data network) are in XML format
- Extensible Markup Language (XML) is a set of rules for encoding documents in machine-readable form
- It is an free of charge open standard
- Can be entered also directly by programming without any tools

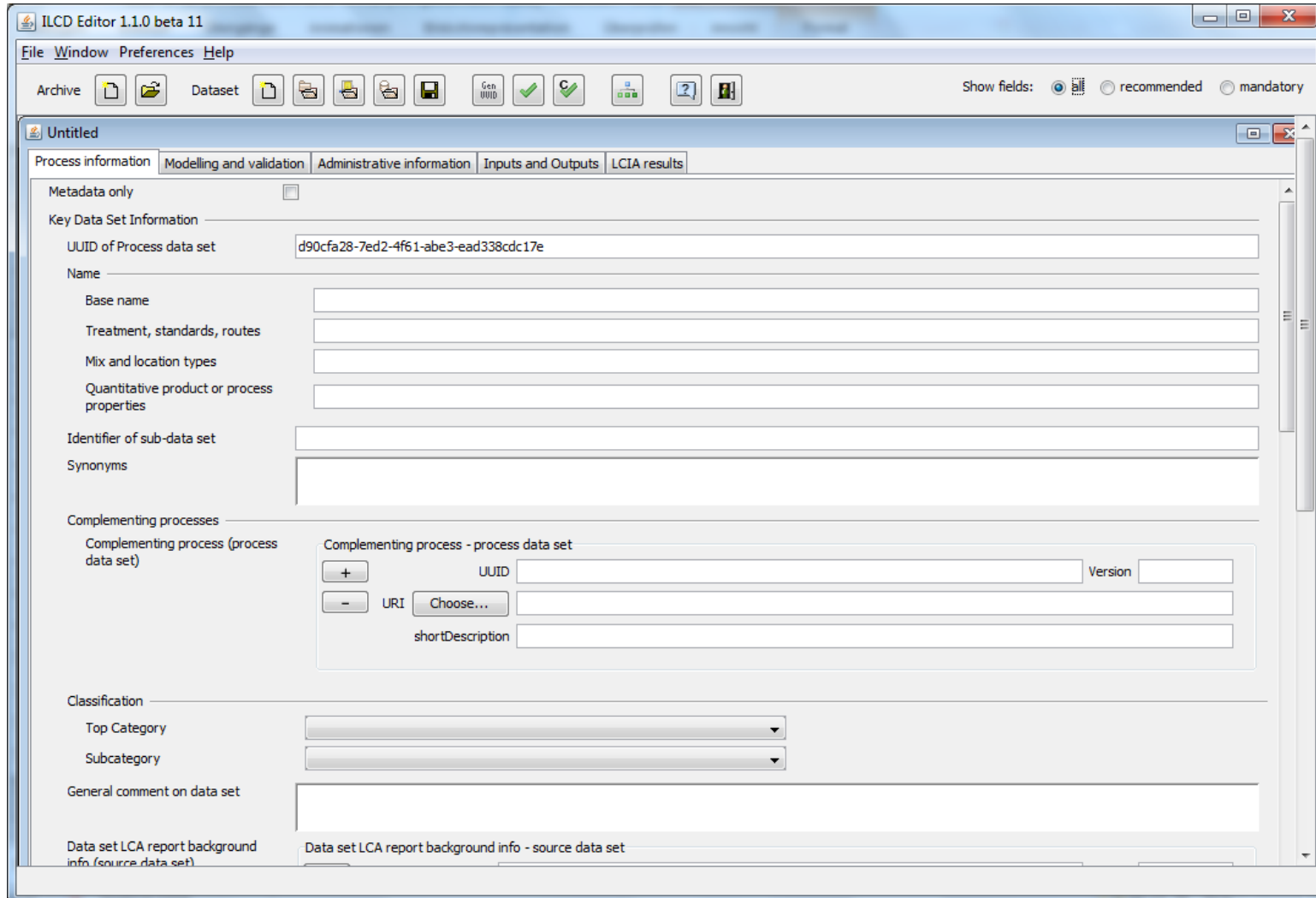


Process data set: Electricity Mix; AC; consumption mix, at consumer; < 1kV (en)	
Table of Contents: Process information - Modelling and validation - Administrative information - Inputs and Outputs	
Process information	
Key Data Set Information	
Location	EU-27
Geographical representativeness description	The data set represents the country / region specific situation, focusing on the main technologies, the region specific characteristics and / or import statistics.
Reference year	2002
Name	Base name; Treatment, standards, routes; Mix and location types; Quantitative product or process properties Electricity Mix; AC; consumption mix, at consumer; < 1kV
Use advice for data set	Use by low voltage electricity customers without own electricity generators or transformers (e.g. at SME and private), which use electricity directly from the grid. The data set can be used for all LC/LCA studies where electricity is needed.
Technical purpose of product or process	Low voltage (<1kV) electricity for final consumers.
Synonyms	power grid mix
Classification	Class name / Hierarchy level Energy carriers and technologies / Electricity
General comment on data set	Good overall data quality. Energy carrier mix information based on official statistical information including import/export. Detailed power plant models were used, which combine measured emissions plus calculated values for not measured emissions of e.g. organics or heavy metals. Energy carrier extraction and processing data is of sufficient to good (e.g. refinery) data quality. Inventory is partly based on primary industry data, partly on secondary literature data.
	Copyright? Yes Owner of data set (contact data set) PE INTERNATIONAL
Quantitative reference	
Reference flow(s)	electricity mix; AC; consumption mix, at consumer; < 1kV - 3.6 MJ (Net calorific value)
Time representativeness	
Data set valid until:	2010
Time representativeness description	Annual average
Geographical representativeness	
Technological representativeness	



- Java application, provided by JRC, that works within an internet browser
- This software helps you to create and edit ILCD formatted data sets (version 1.1) and to check whether they are formally valid and meet the compliance requirements
- From 02.05.2011, the editor is available also for editing LCIA method data sets (draft)
- Available also an application to convert ILCD formatted process data sets to MS Excel format (ILCD2XLS converter beta)
- The editor supports the following ILCD data set types: Process, Flow, Flow property, Unit group, Contact, Source.

Available at: <http://lct.jrc.ec.europa.eu/assessment/tools>



ILCD Editor 1.1.0 beta 11

File Window Preferences Help

Archive Dataset Gen UUID

Show fields: recommended mandatory

Untitled

Process information Modelling and validation Administrative information Inputs and Outputs LCIA results

Metadata only

Key Data Set Information

UUID of Process data set d90cfa28-7ed2-4f61-abe3-ead338cdc17e

Name

Base name

Treatment, standards, routes

Mix and location types

Quantitative product or process properties

Identifier of sub-data set

Synonyms

Complementing processes

Complementing process (process data set)

Complementing process - process data set	
+	UUID <input type="text"/> Version <input type="text"/>
-	URI <input type="text"/> Choose... <input type="button"/>
	shortDescription <input type="text"/>

Classification

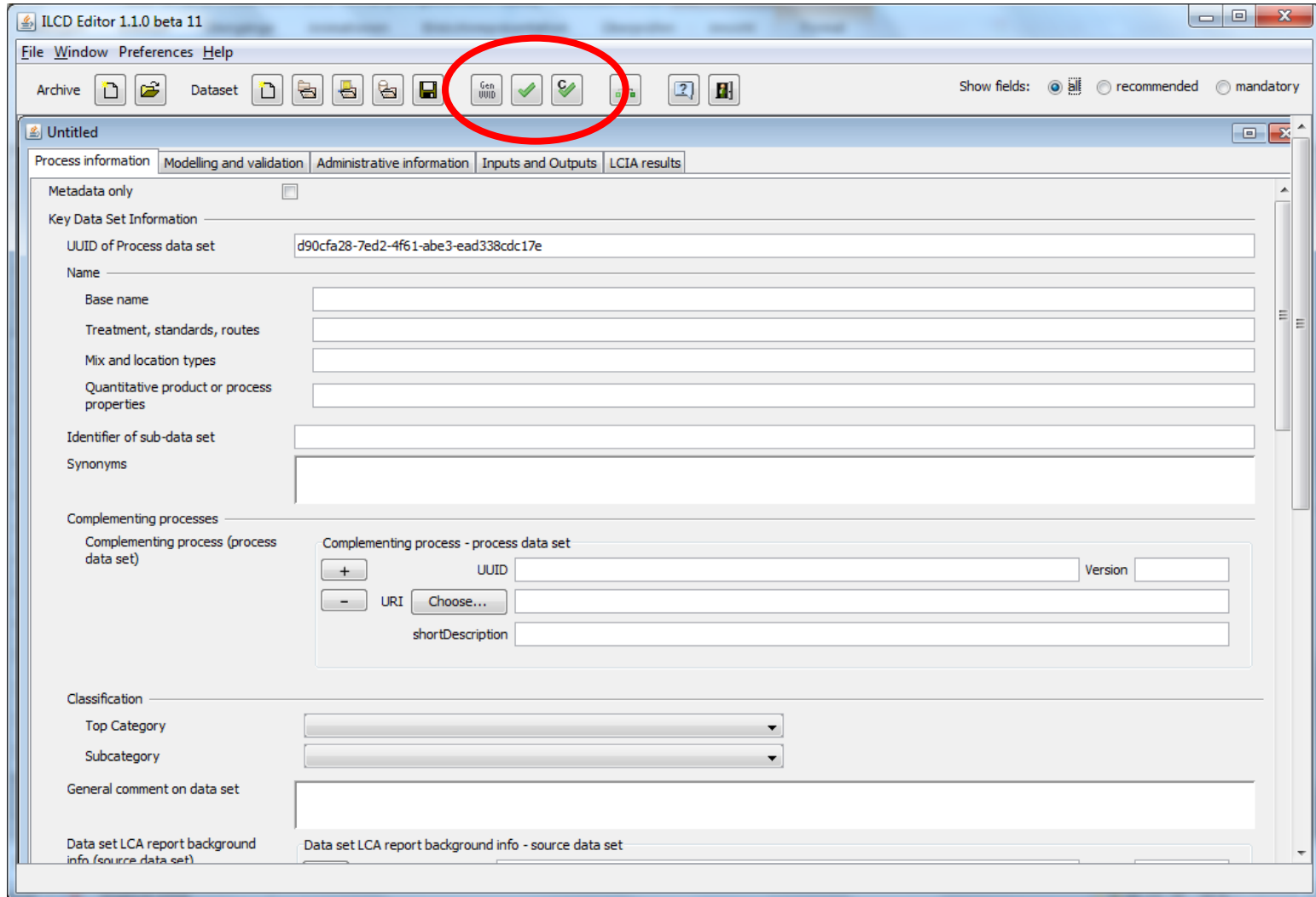
Top Category

Subcategory

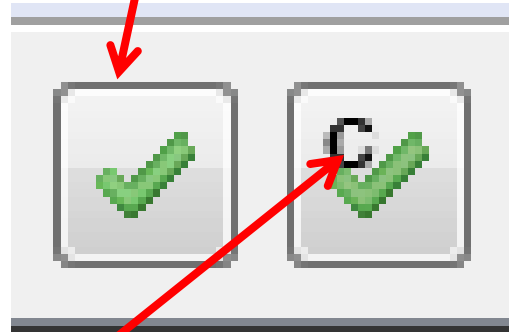
General comment on data set

Data set LCA report background info (source data set)

Data set LCA report background info - source data set



- The green "Validate Dataset" button in the editor's toolbar performs a validity check of the dataset.
- It allows to check automatically whether a data set is formally a valid ILCD 1.1 formatted data set



- The "Check ILCD compliance" button, will perform a check against the ILCD Compliance rules whether the documentation extent meets the documentation requirements

- After the data sets are created they can be displayed in the browser
- They can be uploaded into the ILCD data network
- The network is independently managed network of several servers
- The data sets are open and can be downloaded freely
- Starting point is the ILCD homepage
<http://lct.jrc.ec.europa.eu/>
- Some examples

- Metadata template, for documenting the data set according to ILCD requirements (full and entry level)
- **Process information**
 - Key data set information
 - Quantitative reference
 - Time, geographical, technological representativeness
- **Modelling and validation**
 - LCI method and allocation
 - Data (source, treatment, representativeness)
 - Completeness, validation and compliance
- **Administrative information**
 - Commissioner and goal
 - Data set generator and modeller
 - Data entry by
 - Publication and ownership
- **Inputs and outputs (see data collection template)**

The research leading to these results has received funding from the Fuel Cells and Hydrogen Joint Undertaking under grant agreement n° [256850].