



FC-Hy
Guide

Training Course

**Thurs. 1st September
2011, Berlin**

**Seminaris
Campus Hotel
Berlin**



FC-Hy Guide

Data sets in
ILCD format

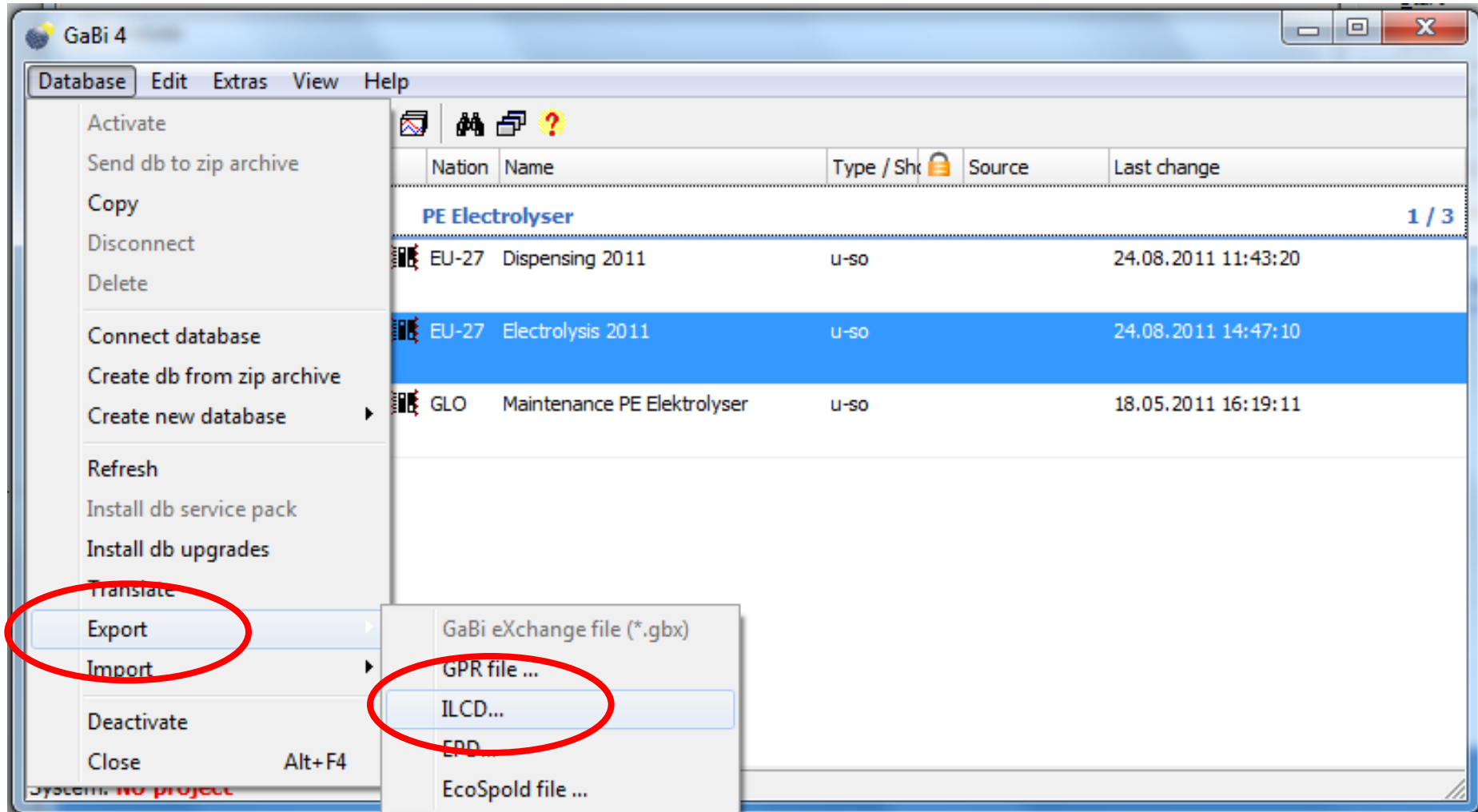
- The ELCD database and upcoming ILCD data sets (data network) are in XML format
- Extensible Markup Language (XML) is a set of rules for encoding documents in machine-readable form
- It is an free of charge open standard
- Can be entered also directly by programming without any tools



Process data set: Electricity Mix; AC; consumption mix, at consumer; < 1kV (en)	
Table of Contents: Process information - Modelling and validation - Administrative information - Inputs and Outputs	
Process information	
Key Data Set Information	
Location	EU-27
Geographical representativeness description	The data set represents the country / region specific situation, focusing on the main technologies, the region specific characteristics and / or import statistics.
Reference year	2002
Name	Base name; Treatment, standards, routes; Mix and location types; Quantitative product or process properties Electricity Mix; AC; consumption mix, at consumer; < 1kV
Use advice for data set	Use by low voltage electricity customers without own electricity generators or transformers (e.g. at SME and private), which use electricity directly from the grid. The data set can be used for all LC/LCA studies where electricity is needed.
Technical purpose of product or process	Low voltage (<1kV) electricity for final consumers.
Synonyms	power grid mix
Classification	Class name / Hierarchy level Energy carriers and technologies / Electricity
General comment on data set	Good overall data quality. Energy carrier mix information based on official statistical information including import/export. Detailed power plant models were used, which combine measured emissions plus calculated values for not measured emissions of e.g. organics or heavy metals. Energy carrier extraction and processing data is of sufficient to good (e.g. refinery) data quality. Inventory is partly based on primary industry data, partly on secondary literature data.
	Copyright? Yes Owner of data set (contact data set) PE INTERNATIONAL
Quantitative reference	
Reference flow(s)	electricity mix; AC; consumption mix, at consumer; < 1kV - 3.6 MJ (Net calorific value)
Time representativeness	
Data set valid until:	2010
Time representativeness description	Annual average
Geographical representativeness	
Technological representativeness	

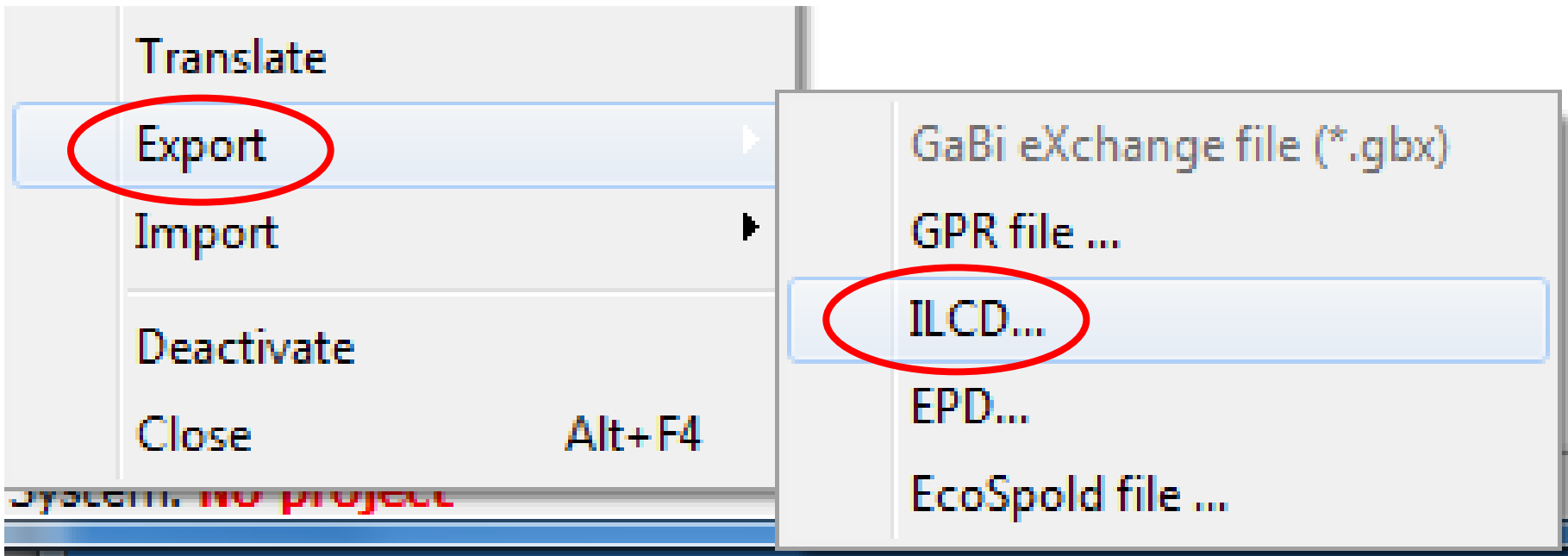


```
<?xml version="1.0" encoding="UTF-8"?>
- <ecoSpold
xsi:schemaLocation="http://www.EcoInvent.org/EcoSpold01 ../ ../org.openlca.ecospold/src/org/openlca/ecospold/proc
" xmlns:xsi="http://www.w3.org/2001/XMLSchema-instance" xmlns="http://www.EcoInvent.org/EcoSpold01">
- <dataset validUnits="" validRegionalCodes="" validCompanyCodes="" validCategories="" timestamp="2001-12-31T12:00:00" nu
- <metaInformation>
- <processInformation>
<referenceFunction infrastructureProcess="false" infrastructureIncluded="false" datasetRelatesToProduct="true" local:
components" localCategory="photovoltaic" subCategory="production of components" category="photovoltaic
emissions aggregated to protect sensitive data. Data 2005 calculated from data 2004 by multiplying amc
factor of  $156*156/(125*125) = 1.56$ ; energy scaled linearly with cell length. " unit="p" amount="1" localN
name="Multi-crystalline silicon cell"/>
<geography text="Europe, Western" location="GLO"/>
<technology text="Average technology"/>
- <timePeriod text="" dataValidForEntirePeriod="true">
<startYear>2005</startYear>
<endYear>2005</endYear>
</timePeriod>
<dataSetInformation timestamp="2008-09-03T11:01:00" version="1.0" type="1" localLanguageCode="en" language
impactAssessmentResult="false" energyValues="0"/>
</processInformation>
- <modellingAndValidation>
<representativeness samplingProcedure="Average from 5 specific processes and companies (4 multi + 1 mono).
<source title="Environmental impacts of PV electricity generation - a critical comparison of energy supply opt
Solar Energy Conference, Dresden, Germany, 4-8 September 2006" number="1" year="2006" sourceType="
additionalAuthors="M.J. de Wild-Scholten, V.M. Fthenakis" firstAuthor="E.A. Alsema"/>
<source title="A cost and environmental impact comparison of grid-connected rooftop and ground-based PV :
Solar Energy Conference, Dresden, Germany, 4-8 September 2006" number="2" year="2006" sourceType="
additionalAuthors="E.A. Alsema, E.W. ter Horst, M. Bächler, V.M. Fthenakis" firstAuthor="M.J. de Wild-Scholt
```



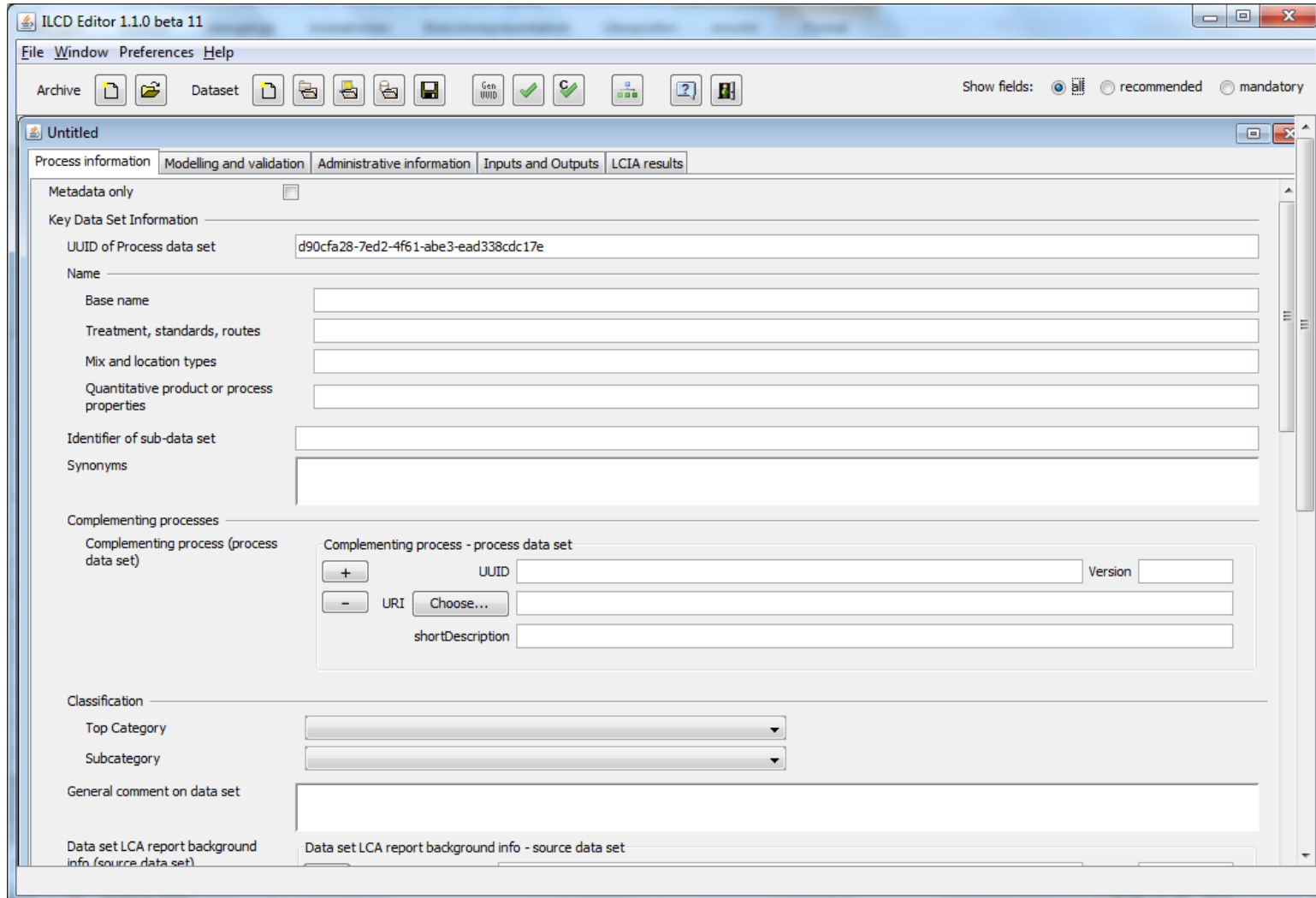
The screenshot shows the GaBi 4.4 application window. The 'Database' menu is open, and the 'Export' option is selected. A sub-menu is displayed, showing the 'ILCD...' option highlighted. The main window displays a table of data for 'PE Electrolyser'.

Nation	Name	Type / Shc	Source	Last change
EU-27	Dispensing 2011	u-so		24.08.2011 11:43:20
EU-27	Electrolysis 2011	u-so		24.08.2011 14:47:10
GLO	Maintenance PE Elektrolyser	u-so		18.05.2011 16:19:11



- Software tool provided by the JRC-IES
- This software helps you to create and edit ILCD formatted data sets (version 1.1) and to check whether they are formally valid and meet the compliance requirements
- The editor supports the following ILCD data set types: Process, Flow, Flow property, Unit group, Contact, Source.

Available at: <http://lct.jrc.ec.europa.eu/assessment/tools>



ILCD Editor 1.1.0 beta 11

File Window Preferences Help

Archive Dataset Gen UUID

Show fields: recommended mandatory

Untitled

Process information Modelling and validation Administrative information Inputs and Outputs LCIA results

Metadata only

Key Data Set Information

UUID of Process data set d90cfa28-7ed2-4f61-abe3-ead338cdc17e

Name

Base name

Treatment, standards, routes

Mix and location types

Quantitative product or process properties

Identifier of sub-data set

Synonyms

Complementing processes

Complementing process (process data set)

Complementing process - process data set	
+	UUID <input type="text"/> Version <input type="text"/>
-	URI <input type="text"/> Choose... <input type="button"/>
	shortDescription <input type="text"/>

Classification

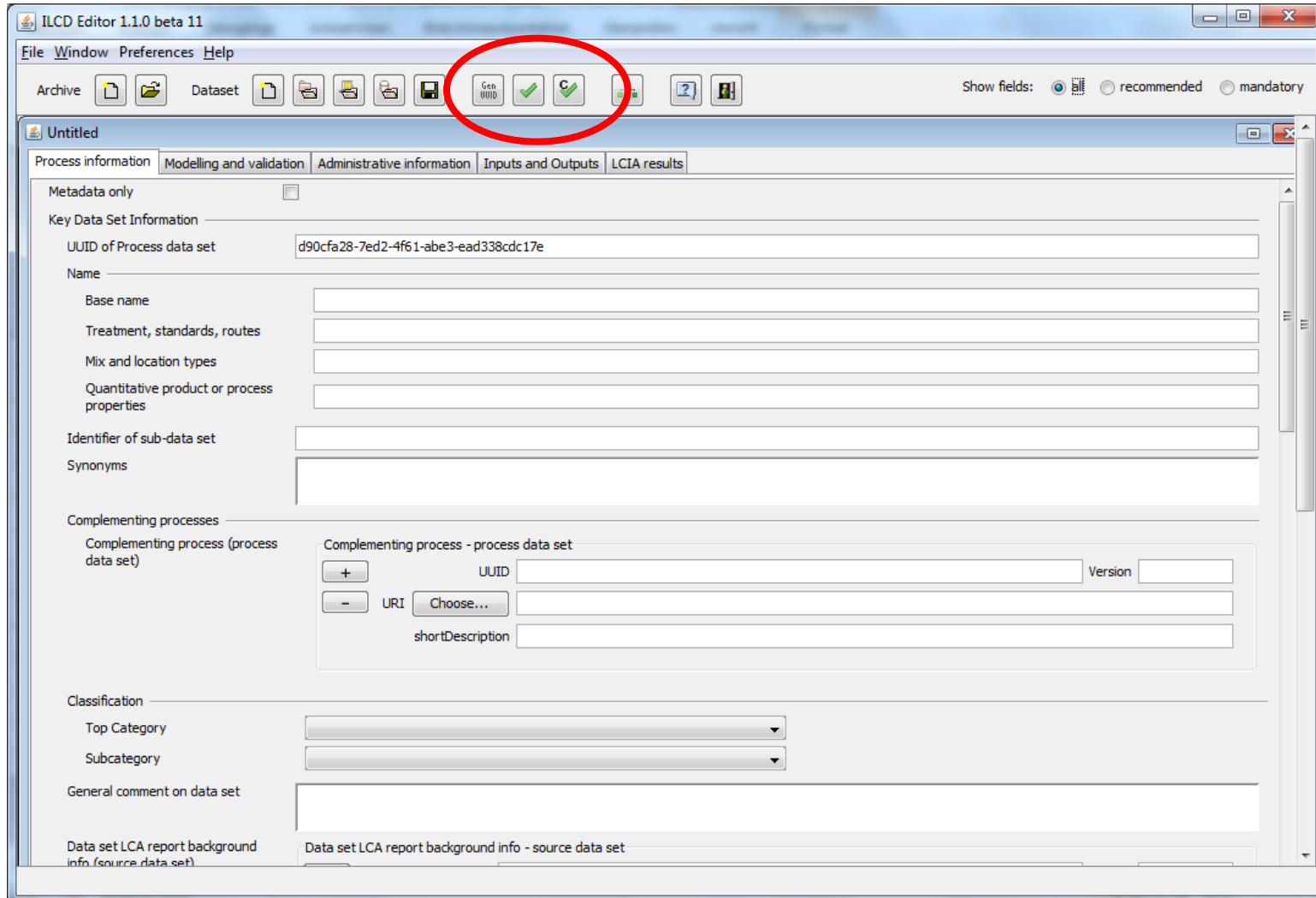
Top Category

Subcategory

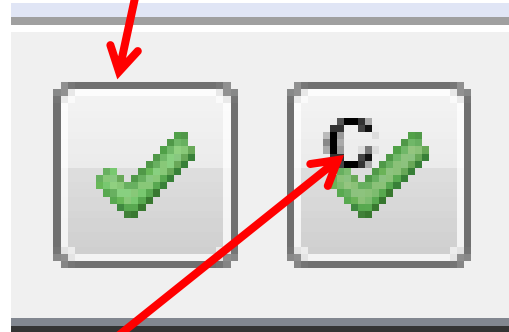
General comment on data set

Data set LCA report background info (source data set)

Data set LCA report background info - source data set



- The green "Validate Data set" button in the editor's toolbar performs a validity check of the dataset.
- It allows to check automatically whether a data set is formally a valid ILCD 1.1 formatted data set



- The "Check ILCD compliance" button, will perform a check against the ILCD Compliance rules whether the documentation extent meets the documentation requirements

- After the data sets are created they can be displayed in the browser
- They can be uploaded into the ILCD data network
- The network is independently managed network of several servers
- The data sets are open and can be downloaded free of cost
- Starting point is the ILCD homepage

<http://lct.jrc.ec.europa.eu/>

The research leading to these results has received funding from the Fuel Cells and Hydrogen Joint Undertaking under grant agreement n° [256328].